

NEWSLETTER February 2022



A reminder that the Township Office will be closed Monday February 21st 2022 for Family Day.

FIRST INTERIM INSTALMENT OF TAXES

The first interim instalment of taxes is due **February 25th, 2022**. We are set up for telephone and Internet banking (takes two or three days to be processed by your bank). Please make sure the funds reach us by the due date. We are **not** set up for debit, Visa or MasterCard. Cash or cheque only.

HOLIDAY GARBAGE

As a result of the Monday February 21st Family Day Holiday, garbage pick up will be one day late.

RECYCLING CART COLLECTION

Please have your cart out by 7:00 a.m. Your recycling will be picked up every two weeks. **Feb. 3, 17 and Mar. 3rd.**

GARBAGE AND RECYCLING BINS

Garbage and recycling bins are to be placed inside the end of driveway and **NOT** on the edge of the road. In the winter month, it is safer to put them out in the morning, rather than risk them being hit by the snowplough. The cost of replacing bins that are damaged is the responsibility of the property owners.



February 14th 2022

FAMILY
is anyone who
loves you
unconditionally.



THE RINK IS READY FOR SKATING

A big thank you, to Mayor Ken Lamming and Bruce Gregoire for keeping the rink up. They are out there no matter the temperature, cleaning and watering the rink. Awesome job!

**Rink is open – 11a.m. to 11 p.m.
No hockey games, only skating.**

The hall and rinks will not be rented until further notice.

Cameras are installed in various locations at the Pavilion and the back of the office to monitor the buildings and yard. We hope this will help to minimize or eliminate any vandalism or misuse of the facilities.

Just a reminder that the Provincial Laws do not permit smoking / vaping **anywhere** on the municipal property.

The change rooms and washrooms will **NOT** be open to the public this year, due to covid 19. Benches will be available to sit and put your skates on.

Please make sure you obey the signs and stay off the ice when the rink is closed. If the weather is too mild and the ice is melting, you will jeopardize the rink and delay the re-opening.

Be safe and have fun!

PRINCE TWP. VOTES

2022 Municipal Election

The next municipal election will be held on Monday, October 24, 2022. Elections for municipal government are held every four years on the fourth Monday of October.

Who can vote in the elections?

Anyone can vote in a municipal election who, on the day of the election is:

- 18 years of age or older
- a Canadian citizen; and
- either a resident of the municipality or a property owner or tenant or the spouse or same sex partner of an owner or tenant in the municipality during a specified time just before the election.

Your name must be on the voters' list in order for you to cast a ballot.

The voters' list is prepared in three steps:

1. A preliminary list is created by the Municipal Property Assessment Corporation (MPAC) based on data it keeps on home ownership and tenancy.
2. The preliminary list is sent to the municipal clerk after a by-election has been called or in advance of a regular election which occurs every 4 years. The clerk can correct any errors on the list, and the corrected list then becomes the voters' list.
3. Changes can be made to the list. If you are not on the voters' list, or if your information is incorrect (for example, you have moved and may be listed at a former address), you may apply to have your name added or your

information corrected. This may be done until the close of voting on voting day in a regular election or by-election. You may have your name added to the voters' list at the voting place. You may be asked to show identification to establish that you are eligible to vote. More information about getting on the voters' list will be provided at a later date.

Who can be a candidate?

- A candidate must be a resident of the municipality or a non-resident owner or tenant of land in the municipality or the spouse of such non-resident owner or tenant;
- A Canadian citizen and at least 18 years old
- Not legally prohibited from voting; and not disqualified by any legislation from holding municipal office.
- You will need 25 signatures from eligible electors on your nomination form and must pay a fee of \$100 (\$200 for mayor). Additional information for voters and candidates about the 2022 municipal election will be communicated more into 2022.



ATTENTION DOG OWNERS

Under by-law 2001-03, all residents who own a dog or dogs must register them by purchasing an annual dog licence. Dog licences are due Jan. 2nd, 2022 and will be available at the Municipal Office.

To avoid a \$15.00 late fee penalty, all dog licenses must be renewed annually before **March 1st, 2022.**

The cost is \$7.50 for spayed or neutered dogs and \$15.00 otherwise.

We will be accepting e-transfers this year. The password will be dogtag. Please email your conformation of your dogs last rabie shot and your telephone number to deputyclerk@twp.prince.on.ca .

OR

We have a locked black mailbox next to the entrance door at the Community Centre and your information and cheque can be placed in there.

After we have received your payment and information, we will then mail the dog tags to you.

If you have any other questions, please call the Township Office at 705-779-2992 ext. 1.

If you no longer have your dog, please contact the office.

Purchasing an annual dog license will ensure that your dog is returned quickly should he/she ever stray and assists us in providing animal control services in our community.

***"What good is the warmth of summer,
without the cold of winter to give it
sweetness."
John Steinbeck***

CAO/TREASURER REPORT

Resident Survey –

<https://www.surveymonkey.com/r/5KV6L3L>

Please copy and paste the above link into your browser and complete this short survey on resident issues.

We have had our first budget meeting for 2022. The second meeting will be in February. Please watch for the notice and join us on Zoom. The survey results will be revealed and Council will continue to deliberate the new budget.

Municipal Fact: Did you know.....

Here are just some of the issues your Township staff are currently working on

- Rolling over 2021 data to 2022 in accounting and tax systems
- Entering interim tax information, changes and updates
- Running interim tax bills
- Collecting taxes
- Renewing dog tags
- Preparing for 2021 year end Audit – completing audit working papers and reconciliations
- Preparing progress reports for all grants previously received – COVID Funding grant, COVID Infrastructure grant, Ontario Community Infrastructure Fund, Gas Tax, Northern Ontario Heritage Fund
- Preparing new grant submissions – Summer Student grant, Northern Ontario Heritage Fund grant, Northern Ontario Resource Development Fund

- Budget- collection and updating of information, preparing reports
- Developing a Fee Structure, policies and procedures for the Marina
- Managing current capital projects: Kitchen renovations, office renovations, library COVID renovations, roads projects, marina project
- Obtaining quotes and preparing reports for Insurance, internet, street lighting, recycling
- Asset Management – updating infrastructure in GIS system and working with Public Sector Digest on asset management plan update
- Reports, agenda, resolutions and by-laws for Council meetings in January- regular and special meetings

Respectfully,
Mary Lynn Duguay

If you have any questions, comments or concerns, please contact the Municipal Office, or any member of Council:

Mayor

Ken Lamming 705 - 971-3663
klamming@princetwp.ca

Councillors

Eugene Caputo (705)542-5324
ecaputo@princetwp.ca

Ian Chambers 705-779-3364
ichambers@princetwp.ca

Enzo Palumbo 705-975-4343
epalumbo@princetwp.ca

Michael Matthews 705-779-3575
mmathews@princetwp.ca

COUNCIL MEETING SCHEDULE

Regular Council Meetings
Tuesday February 8th, 2022
6:45 p.m.

Agendas are posted on the website the day before the meeting. If you require a copy, please call ahead so it can be printed for pickup on Monday.
A fee of \$0.25/page applies.

BY-LAW ENFORCEMENT OFFICER

Dave Harnish (705)-779-9927

ANIMAL CONTROL OFFICER

Barbie Rudnicki (705)255-0419





ONTARIO EARLY YEARS

Prince Township EarlyON Child and Family Centre staff have planned a February full of exciting virtual programs and special events! Information on upcoming activities can be found on our Facebook page. Pre-registration for all activities is required through www.KEyON.ca. Please call 705-779-3627, or message us on Facebook for more information. Thank you!

Find us on Facebook by searching: Earlyon Child and Family Centre Prince, SSM & Sault North



LIBRARY

BOARD MEETING: This is scheduled for Thursday February 3rd at 5:30 p.m. The Chair will determine if it will be in person or by Zoom.

THE LIBRARY IS OPEN TO THE PUBLIC. WE ARE A VOLUNTEER LIBRARY. PLEASE CALL AHEAD to make sure a volunteer is

available. 705-779-2992 ext. 5

NEW LIBRARY HOURS:

MONDAY 2:00 -4:00

WEDNESDAY 1:00 -2:30

THURSDAY 10:00 – NOON and 2:00 –

4:00 **FRIDAY** 10:00-NOON and 2:00 –

4:00 P.M. CLOSED SATURDAY,

SUNDAY and STATUTARY

HOLIDAYS.

USE THE BACK DOOR TO ACCESS THE LIBRARY.

Hand sanitizer is available at the entrance. Protective face masks are mandatory and social distancing will be maintained.

BOOK CLUB: We are hoping to restart and meet this month. If we do meet it will be on the third Tuesday of the month in the large hall. Use the back door.

RECOMMENDED BOOKS: These selections are from our leased collection of McNaughton Books.

LIGHTNING STRIKE by William Kent Krueger.(LP) As a twelve-year-old Cork O'Connor finds the body of a man he revered. Cork's father is the sheriff at the time and it seems that the man's death is a suicide. Together they must choose between what their heads tell them is true and what their hearts know is right.

MERCY by David Baldacci. Still searching for her twin sister, FBI agent Atlee Pine is close and when the truth is, revealed, Atlee will face the greatest danger yet...

WISH YOU WERE HERE by Jodi

Picoult. Diana O'Toole has everything planned-proposal, romantic getaway to the Galapagos... but then a virus that is felt worlds away appears in the city and Finn has to stay behind. A novel about human resilience of the human spirit in a moment of crisis. We are all going through this!!!!

WE JUST GOT THESE IN : **Find Me** by Alafair Burke, **Twenty Years Later** by Charlie Donlea, **Shadows of Swanford Abbey** by Julie Klassen, **The Runaway** by Nick Petrie

REMEMBER: You are able to search from home using **OPAC** to find out what we have in the library. **YOU NEED TO USE YOUR PIN NUMBER.** Call and we will give it to you. You can send in your order to us and we will fill it out for you for pick up, if you want.

BOOK SALE in the Library. *A sweetheart of a deal during February.*
All cook books 50 cents each.

DONATIONS: AT THE PRESENT TIME WE ARE NOT ACCEPTING ANY DONATIONS.
PRINCE WOMEN'S INSTITUTE

The next regular scheduled meeting is **Monday ***February 28th** at 1:00 p.m. in the Library. Please note the change of date. All Covid protocols will be in pace. PLEASE USE THE BACK DOOR.

POSTAL DELIVERY / 911 SIGNS

Property owners are reminded to keep mailboxes (including green boxes) clear of snow and other obstacles in order to receive uninterrupted mail should be kept clear of snow so that they are visible by emergency vehicles. The sign should be visible by emergency personnel from 100ft.

Safety reminder to residents Smoke and Carbon Monoxide Alarms

Property owners ensure you have working smoke alarms on each storey of your home and outside every sleeping area.

Fire moves so fast that you may have less than 60 seconds to safely escape a fire, so early warning is crucial to survival. Only working smoke alarms give you that early warning. Developing and practicing a home escape plan is just as important.

Simple smoke and carbon monoxide alarm tips:

- Install smoke alarms on every storey and outside all sleeping areas of your home. For added protection, install a smoke alarm in every bedroom according to manufacturer's recommendations. Larger homes may require additional smoke alarms;
- Install carbon monoxide alarms outside all sleeping areas if your home has a fuel-burning appliance, fireplace or attached garage. For added protection, install a carbon monoxide alarm on every storey of your home according to manufacturer's recommendations;
- Test smoke and carbon monoxide alarms monthly by pressing the test button. Change the batteries every year; and,
- Smoke and carbon monoxide alarms wear out over time. Replace alarms according to manufacturer's recommendations.

Simple steps for home fire escape planning include:

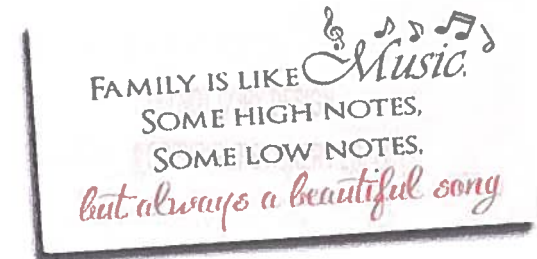
- Everyone should know two ways out of each room, if possible;
- All exits must be unobstructed and easy to use;

- If someone in your home has a disability, develop a home fire escape plan with your household that takes into account their unique needs. Determine who will be responsible for helping young children, older adults and anyone who needs assistance to escape;
- Choose a meeting place outside, such as a tree or a lamp post, where everyone can be accounted for;
- Call the fire department from outside the home, from a cell phone or a neighbour's home;
- Practice your home fire escape plan; and,
- Once out, stay out. Never re-enter a burning building.



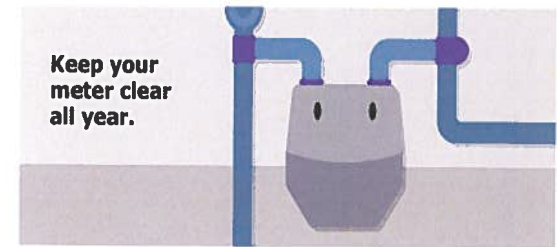
Our Prince Twp. Volunteer Fire Dept. use green flashing lights in their personal vehicles when they are responding to the fire hall for an emergency. If you see a vehicle with a green flashing light, please yield the right of way.

Thanks for your co-operation!



GAS METER SAFETY

Gas Meter Safety



It's important to **keep your natural gas meter and exhaust vents free of ice and snow** in winter, and clear of storage boxes, garden tools and vegetation in summer. This helps ensure that gas-fired equipment functions safely and efficiently, and allows Union Gas easy access for accurate meter readings or emergency response.

Indoor heating equipment – your furnace, water heater and thermostat – needs to be accessible too. Please ensure that storage boxes and household supplies are kept well away from indoor appliances so Union Gas or your heating

contractor can get at them for emergency service or repairs.

Be sure your pets are secured and not blocking access to your gas meter or equipment during meter reading and service calls. A visiting Union Gas representative can surprise even the friendliest dog and lead to aggressive behavior and bites.

HOME SAFETY TIPS

Natural gas is an efficient and cleaner way to heat your home and water. Follow these tips for staying safe all year round.

1. Install a carbon monoxide detector in your home –install at least one near sleeping areas and each floor and test monthly.
2. Have your natural gas appliances/equipment serviced and maintained by a TSSA registered heating contractor yearly.
3. Keep your fireplace clean and free of obstructions. Install a safety screen or hearth guard.
4. Go outside immediately and call 911 or the Enbridge Gas emergency number if you smell rotten eggs and suspect a leak

STAY SAFE



PRINCE TOWNSHIP RECYCLING CART COLLECTION

The recycling cart does not have to be placed out on every pick-up. It should not be put out unless it is at least half full.

Carts must be out by 7:30 a.m. on your pick-up day.

Please remove caps/lids and rinse food contents before recycling containers. All food trays, strawberry containers, etc. are not accepted and should be placed in your garbage. Large quantities of cardboard boxes should be broken down to 2' x 2' x 1' bundles (taped or tied with string) and placed beside the collection cart.

Note: Florescent lights are to be disposed of at the **Household Hazardous Waste Depot**.

Blue Lid

- Steel (tin) food cans
- Aluminium cans
- No. 1 plastic bottles (i.e. pop bottles)
- No. 2 plastic bottles (i.e. shampoo bottles)
- Glass bottles and jars

Grey Lid

- Newspapers and flyers
- Magazines
- Phone books
- Boxboard/small boxes (i.e. cereal boxes)
- Paper egg cartons
- Toilet/towel paper rolls
- Clean milk cartons

- Clean pizza boxes
- All other paper products (i.e. mail, computer paper)



Emergency Preparedness starts with You

- Do you know what to do in an Emergency?
- Do you have the things you will need?

It's easy visit www.ontario.ca/beprepared

Remember - Be neighbourly
Check on your neighbours

A MESSAGE FROM YOUR EMERGENCY MANAGEMENT TEAM

The world Pandemic should serve to remind us that "it can happen here". A pandemic is only one of many challenges that we may face. Our Emergency Management Team has spent much time and effort to identify and to prioritize the potential emergencies that our municipality may face. Fires, storms, extended power outages to name a few, but pandemic was the last on our list.

We encourage you to make 2022 the year to get "Prepared".

Emergency Management Ontario recommends that we all prepare to have the items you and your family will need to live for 72 hrs.

You can visit Emergencymanagementontario.ca to get started.

Thank you and Stay Safe.

A graphic with the text "Happy Valentine's Day" in a red, cursive, handwritten-style font.

Snowmobile Safety

Before you leave

- fill up your gas tank
- check the weather forecast before heading out.
- contact the local snowmobile club to check trail and ice conditions
- dress appropriately – wear clothing in layers, and make your top layer a snowmobile suit or other windproof layer
- tell someone :
 - where you're going
 - the route you will take
 - a description of your snowmobile
 - when you expect to return
- **never** travel alone

Remember: Exposure to extreme cold can lead to frostbite and hypothermia. Your risk goes up as the temperature goes down.

What to bring

- Pack a snowmobile survival kit that includes:
- first aid kit

- GPS unit, trail map and compass
 - matches (or lighter) in a waterproof container
 - knife, saw or axe
 - ice picks (if you must cross over a frozen river or lake)
 - flashlight
 - whistle
 - high-energy food like nuts or granola bars
 - an extra set of dry clothing
- You should also bring a snowmobile mechanical kit that includes:
- spare spark plug and drive belt
 - tow rope
 - screwdriver, wrenches and hammer
 - owner's manual

While you are driving

- always drive within your ability
- take extra care on corners and hills
- obey speed limits and road/trail signs
- always stay on the right-hand side of the trail
- use appropriate hand signals before stopping, slowing down or turning
- take extra care at road and rail crossings – cross roads at designated crossings and at a 90-degree angle so you can cross safely and quickly
- never ride on private property without permission of the land owner

Driving at night

- reduce your speed – some hazards are harder to see in the dark
- use your headlights and drive at a speed where they can shine ahead of you

- wear clothing that has reflective markings so that you are more visible to others

Driving on ice

- avoid driving on unfamiliar frozen lakes and rivers, as open water may not be visible
- if you must drive over ice, wear a buoyant snowmobile suit
- always drive on ice that is new, hard and clear
- never drive on ice that is slushy, weak, near moving water or that has recently thawed and refrozen
- check ice conditions with the local snowmobile club before you head out
www.ofsc.on.ca/

Know the dangers of ice

Ice Factors

Many factors affect ice thickness including: type of water, location, the time of year and other environmental factors such as:

- Water depth and size of body of water.
- Currents, tides and other moving water.
- Chemicals including salt.
- Fluctuations in water levels.
- Logs, rocks and docks absorbing heat from the sun.
- Changing air temperature.
- Shock waves from vehicles traveling on the ice.

Ice Colour

- The colour of ice may be an indication of its strength.
- Clear blue ice is strongest.
- White opaque or snow ice is half as strong as blue ice. Opaque ice is formed by wet snow freezing on the ice.

- Grey ice is unsafe. The grayness indicates the presence of water.

Did you know ice thickness should be:

- 15 cm for walking or skating alone
- 20 cm for skating parties or games
- 25 cm for snowmobiles.

Check with local authorities before heading out.
Avoid going out on ice at night.

Happy
Family
Day

If you would like to have the newsletter
emailed to you every month, please email
lorraine@twp.prince.on.ca

SNOW REMOVAL REMINDER



Pushing snow across roads and streets is not only a safety hazard; it is also against the law. The Ontario Traffic Act states:
No person shall deposit snow or ice on a roadway without permission in writing to do so from the Ministry or the road authority responsible for the maintenance of the road. R.S.O. 1990, c. H.8, s. 181

Prince Twp. By-law 2019-38 also prohibits this action.

OFFENDERS WILL BE TICKETED

**Reminder: Smoking or Vaping is
NOT permitted on Municipal
Property**

