

NEWSLETTER February 2023

A reminder that the Township Office will be closed Monday February 20th, 2023, for Family Day.

FIRST INTERIM INSTALMENT OF TAXES

The first interim instalment of taxes is due **February 25th, 2023**. We are set up for telephone and Internet banking (takes two or three days to be processed by your bank). Please make sure the funds reach us by the due date. We are **not** set up for interac debit, Visa or MasterCard. Cash or cheque only.

HOLIDAY GARBAGE

As a result of the Monday February 20th Family Day Holiday, garbage pick up will be one day late.

RECYCLING CART COLLECTION

Please have your cart out by 7:00 a.m. Your recycling will be picked up every two weeks. **Feb. 2, 16 and Mar. 2nd**.

GARBAGE AND RECYLING BINS

Garbage and recycling bins are to be placed inside the end of your driveway and **NOT** on the edge of the road. In the winter month, it is safer to put them out in the morning, rather than risk them being hit by the snowplough. The cost of replacing bins that are damaged is the responsibility of the property owners.



February 14th 2023



THE RINK IS READY FOR SKATING

A big thank you, to all the volunteers for keeping the rink up. They are out there no matter the temperature, cleaning and watering the rink. Awesome job!

If you have time and want to help with the rink, please email clerk@twp.prince.on.ca or call this office at 705-779-2992.

Rink is open – Please check out our website for hours of operation.

Cameras are installed in various locations at the Pavilion and the back of the office to monitor the buildings and yard. We hope this will help to minimize or eliminate any vandalism or misuse of the facilities.

Just a reminder that the Provincial Laws do not permit smoking / vaping **anywhere** on the municipal property.

The change room will be open to put your skates on.

Please make sure you obey the signs and stay off the ice when the rink is closed. If the weather is too mild and the ice is melting, you will jeopardize the rink and delay the re-opening.

Be safe and have fun!



February 20th 2023

FAMILY
is anyone who
loves you unconditionally.



ATTENTION DOG OWNERS

Under by-law 2001-03, all residents who own a dog or dogs must register them by purchasing an annual dog licence. Dog licences are due Jan. 2nd, 2023 and will be available at the Municipal Office.

To avoid a \$15.00 late fee penalty, all dog licenses must be renewed annually before **March 1st, 2023.**

The cost is \$7.50 for spayed or neutered dogs and \$15.00 otherwise.

We will be accepting e-transfers this year. The password will be dog tag. Please email your conformation of your dogs last rabies shot and your telephone number to deputyclerk@twp.prince.on.ca.

After we have received your payment and information, we will then mail the dog tags to you.

OR

You can visit the Prince Twp. office.

If you have any other questions, please call the Township Office at 705-779-2992 ext. 1.

If you no longer have your dog, please contact the office.

Purchasing an annual dog license will ensure that your dog is returned quickly should he/she ever stray and assists us in providing animal control services in our community.



MUNICIPAL ADMINISTRATOR REPORT

It's been great to see the Pavilion being used for another winter season as an outdoor rink, being operated for our residents by a dedicated crew of volunteers.

Property Tax bills for the first half of the year have been mailed out to residents, please ensure you keep your property taxes up to date. Should you have questions or concerns, do not hesitate to reach out to the office. We are here to help.

Family Day will soon be upon us again as Monday February 20 is the day. As a reminder to everyone the Municipal Office will closed for the day.

*Respectfully,
Andrew Nowlan*

If you have any questions, comments, or concerns, please contact the Municipal Office, or any member of Council:

Mayor

Enzo Palumbo (705)779-2992 ext.3
epalumbo@princetwp.ca

Councillors

Eugene Caputo (705)542-5324
ecaputo@princetwp.ca

Melanie Mick (705)255-7895
mmick@princetwp.ca

Margaret Christenson (705)779-3996
mchristenson@princetwp.ca

Jane Weir (705)257-7926
jweir@princetwp.ca

COUNCIL MEETING SCHEDULE

Regular Council Meetings
Tuesday February 14th, 2023
6:45 p.m.

Agendas are posted on the website the day before the meeting. If you require a copy, please call ahead so it can be printed for pickup on Monday.
A fee of \$0.25/page applies.

BY-LAW ENFORCEMENT OFFICER
Dave Harnish (705)-779-9927

ANIMAL CONTROL OFFICER
Barbie Rudnicki (705)255-0419

PLEASE NOTE THE PRINCE TWP. WEBSITE IS UNDER CONSTRUCTION



ONTARIO EARLY YEARS

Prince Township EarlyON Child and Family Centre is open for in-person programming! All program and event information can be found at www.keyon.ca as well as on our Facebook page. Please call 705-779-3627 for more information.

Monday	9:00am – 2:00pm
Tuesday	9:00am – 12:00pm
Wednesday	9:00am – 2:00pm
Thursday	2:00pm – 7:00pm
Friday	9:00am – 2:00pm

Find us on Facebook: EarlyOn Child and Family Centre Prince, SSM & Sault North



LIBRARY NEWS

LIBRARY BOARD MEETING:

Thursday February 2nd at 5:30 p.m. in the library.

We are a **VOLUNTEER** library.

Please call ahead 705-779-2992 ext. 5 leave a message if no one answers as they could be out of the room.

FEBRUARY HOURS: *** Some are new/changed***

MON: 10:00 -NOON and 1:00 – 3:00

TUES: 2:00 – 4:00

WED: 10:00-NOON

1:00- 2:30

THURS: 1:00- 3:00

4:00 – 7:00p.m. *CALL AHEAD

FRI: 10:00 – NOON and 2:00 – 4:00

SATURDAY: 10:00 – 1:00 ***if

EarlyOn is open

BOOK CLUB: We meet on the third Wednesday of the month at 1:00 p.m. in the library. February's selection is

Wish You Were Here by Jodi Picoult. March 15 What Alice Forgot by Liane Moriarty; April 09 Miss Benson's

Beetle by Rachel Joyce; May 17 The Spoon Stealer by Lesley Crewe;

June 21 The Ship Who Sang by Anne McCaffrey. You may join us any time.

RECOMMENDED BOOKS: These are from our McNaughton selection, but

there are some excellent large print on the bookcase and "new to us" on the brown table or the revolving stand.

Louise Penny: A young man and woman have reappeared in the Surete du Quebec investigator's lives. The two were young children when their troubled mother was murdered, leaving them damaged and shattered. Now they have arrived I Three Pines. But to what end? Gamache is an avowed believer in the power of things seen and unseen. This novel has fact, fiction, and otherworldly elements in **A WORLD OF CURIOSITIES.**

DESERT STAR a Renee Ballard Harry Bosch novel by Michael Connelly. They are working together to hunt the killer who is Bosch's "white whale" - a man responsible for the murder of an entire family...

THE LAST PARTY a novel by Clare Mackintosh. On New Year's Eve, the host has a house full of guests and by midnight he is dead, and all the guests are suspects...

THE COUPLE AT THE TABLE By Sophie Hannah. Jane and William are enjoying their honeymoon at an exclusive, couples-only resort until Jane receives a note warning her to beware of the couple at the table nearest to you." But there are five other couples present in the room and someone will be dead by morning...

POSTAL DELIVERY / 911 SIGNS

Property owners are reminded to keep mailboxes (including green boxes) clear of snow and other obstacles to receive uninterrupted mail should be kept clear of snow so that they are visible by emergency vehicles.

The sign should be visible by emergency personnel from 100ft.



Safety reminder to residents Smoke and Carbon Monoxide Alarms

Property owners ensure you have working smoke alarms on each storey of your home and outside every sleeping area.

Fire moves so fast that you may have less than 60 seconds to safely escape a fire, so early warning is crucial to survival. Only working smoke alarms give you that early warning. Developing and practicing a home escape plan is just as important.

Simple smoke and carbon monoxide alarm tips:

- Install smoke alarms on every storey and outside all sleeping areas of your home. For added protection, install a smoke alarm in every bedroom according to manufacturer's recommendations. Larger homes may require additional smoke alarms;
- Install carbon monoxide alarms outside all sleeping areas if your home has a fuel-burning appliance, fireplace or attached garage. For added protection, install a carbon monoxide alarm on every storey of your home according to manufacturer's recommendations;
- Test smoke and carbon monoxide alarms monthly by pressing the test button. Change the batteries every year;
- Smoke and carbon monoxide alarms wear out

over time. Replace alarms according to manufacturer's recommendations.

Simple steps for home fire escape planning include:

- Everyone should know two ways out of each room, if possible;
- All exits must be unobstructed and easy to use;
- If someone in your home has a disability, develop a home fire escape plan with your household that considers their unique needs. Determine who will be responsible for helping young children, older adults and anyone who needs assistance to escape;
- Choose a meeting place outside, such as a tree or a lamp post, where everyone can be accounted for;
- Call the fire department from outside the home, from a cell phone or a neighbour's home;
- Practice your home fire escape plan; and,
- Once out, stay out. Never re-enter a burning building.



Our Prince Twp. Volunteer Fire Dept. use green flashing lights in their personal vehicles when they are responding to the fire hall for an emergency. If you see a vehicle with a green flashing light, please yield the right of way. Thanks for your co-operation!

We Are Hiring!

This officer is a Lake State University grad.

We are establishing a pool of qualified new recruit police officer and Special Constable candidates to fill vacancies.

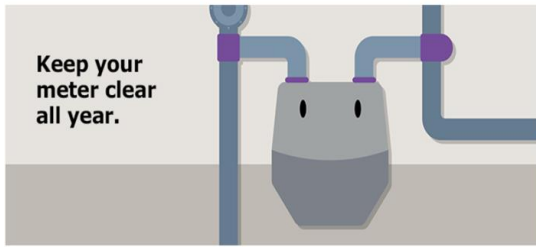
Sault Ste. Marie POLICE

Apply at saultpolice.ca/careers

Contact Sergeant Derek MacFarlane d.macfarlane@ssmps.org for details

GAS METER SAFETY

Gas Meter Safety



It's important to **keep your natural gas meter and exhaust vents free of ice and snow** in winter, and clear of storage boxes, garden tools and vegetation in summer. This helps ensure that gas-fired equipment functions safely and efficiently, and allows Union Gas easy access for accurate meter readings or emergency response.

Indoor heating equipment – your furnace, water heater and thermostat – needs to be accessible too. Please ensure that storage boxes and household supplies are kept well away from indoor appliances so Union Gas or your heating contractor can get at them for emergency service or repairs.

Be sure your pets are secured and not blocking access to your gas meter or equipment during meter reading and service calls. A visiting Union Gas representative can surprise even the friendliest dog and lead to aggressive behavior and bites.

HOME SAFETY TIPS

Natural gas is an efficient and cleaner way to heat your home and water. Follow these tips for staying safe all year round.

1. Install a carbon monoxide detector in your home –install at least one near

sleeping areas and each floor and test monthly.

2. Have your natural gas appliances/equipment serviced and maintained by a TSSA registered heating contractor yearly.
3. Keep your fireplace clean and free of obstructions . Install a safety screen or hearth guard.
4. Go outside immediately and call 911 or the Enbridge Gas emergency number if you smell rotten eggs and suspect a leak

STAY SAFE



PRINCE TOWNSHIP RECYCLING CART COLLECTION

The recycling cart does not have to be placed out on every pick-up. It should not be put out unless it is at least half full.

Carts must be out by 7:30 a.m. on your pick-up day.

Please remove caps/lids and rinse food contents before recycling containers. All food trays, strawberry containers, etc. are not accepted and should be placed in your garbage. Large

quantities of cardboard boxes should be broken down to 2' x 2' x 1' bundles (taped or tied with string) and placed beside the collection cart.

Note: Florescent lights are to be disposed of at the [Household Hazardous Waste Depot](#).

Blue Lid

- Steel (tin) food cans
- Aluminium cans
- No. 1 plastic bottles (i.e. pop bottles)
- No. 2 plastic bottles (i.e. shampoo bottles)
- Glass bottles and jars

Grey Lid

- Newspapers and flyers
- Magazines
- Phone books
- Boxboard/small boxes (i.e. cereal boxes)
- Paper egg cartons
- Toilet/towel paper rolls
- Clean milk cartons
- Clean pizza boxes
- All other paper products (i.e. mail, computer paper)



Emergency Preparedness starts with You

- Do you know what to do in an Emergency?
- Do you have the things you will need?

It's easy visit www.ontario.ca/beprepared

Remember - Be neighbourly.
Check on your neighbours.

A MESSAGE FROM YOUR EMERGENCY MANAGEMENT TEAM

The world Pandemic should serve to remind us that "it can happen here".

A pandemic is only one of many challenges that we may face. Our Emergency Management Team has spent much time and effort to identify and to prioritize the potential emergencies that our municipality may face. Fires, storms, extended power outages to name a few, but pandemic was the last on our list.

We encourage you to make 2022 the year to get "Prepared."

Emergency Management Ontario recommends that we all prepare to have the items you and your family will need to live for 72 hrs.

You can visit Emergencymanagementontario.ca to get started.

Thank you and Stay Safe.

Happy Valentine's Day

Snowmobile Safety

Before you leave

- fill up your gas tank
- check the weather forecast before heading out.
- contact the local snowmobile club to check trail and ice conditions
- dress appropriately – wear clothing in layers, and make your top layer a snowmobile suit or other windproof layer
- tell someone :
- where you're going
- the route you will take
- a description of your snowmobile
- when you expect to return
- **never** travel alone

Remember: Exposure to extreme cold can lead to frostbite and hypothermia. Your risk goes up as the temperature goes down.

What to bring

Pack a snowmobile survival kit that includes:

- first aid kit
- GPS unit, trail map and compass
- matches (or lighter) in a waterproof container
- knife, saw or axe
- ice picks (if you must cross over a frozen river or lake)
- flashlight
- whistle
- high-energy food like nuts or granola bars
- an extra set of dry clothing

You should also bring a snowmobile mechanical kit that includes:

- spare spark plug and drive belt
- tow rope

- screwdriver, wrenches and hammer
- owner's manual

While you are driving

- always drive within your ability
- take extra care on corners and hills
- obey speed limits and road/trail signs
- always stay on the right-hand side of the trail
- use appropriate hand signals before stopping, slowing down or turning
- take extra care at road and rail crossings – cross roads at designated crossings and at a 90-degree angle so you can cross safely and quickly
- never ride on private property without permission of the land owner

Driving at night

- reduce your speed – some hazards are harder to see in the dark
- use your headlights and drive at a speed where they can shine ahead of you
- wear clothing that has reflective markings so that you are more visible to others.

Driving on ice

- avoid driving on unfamiliar frozen lakes and rivers, as open water may not be visible
- if you must drive over ice, wear a buoyant snowmobile suit
- always drive on ice that is new, hard and clear
- never drive on ice that is slushy, weak, near moving water or that has recently thawed and refrozen
- check ice conditions with the local snowmobile club before you head out
www.ofsc.on.ca/

Know the dangers of ice

Ice Factors

Many factors affect ice thickness including type of water, location, the time of year and other environmental factors such as:

- Water depth and size of body of water.
- Currents, tides, and other moving water.
- Chemicals including salt.
- Fluctuations in water levels.
- Logs, rocks, and docks absorbing heat from the sun.
- Changing air temperature.
- Shock waves from vehicles traveling on the ice.

Ice Colour

- The colour of ice may be an indication of its strength.
- Clear blue ice is strongest.
- White opaque or snow ice is half as strong as blue ice. Opaque ice is formed by wet snow freezing on the ice.
- Grey ice is unsafe. The grayness indicates the presence of water.

Did you know ice thickness should be:

- 15 cm for walking or skating alone.
- 20 cm for skating parties or games
- 25 cm for snowmobiles.

Check with local authorities before heading out.
Avoid going out on ice at night.

If you would like to have the newsletter emailed to you every month, please email
Deputyclerk@twp.prince.on.ca

SNOW REMOVAL REMINDER



Pushing snow across roads and streets is not only a safety hazard; it is also against the law. The Ontario Traffic Act states:
No person shall deposit snow or ice on a roadway without permission in writing to do so from the Ministry or the road authority responsible for the maintenance of the road. R.S.O. 1990, c. H.8, s. 181


Prince Twp. By-law 2019-38 also prohibits this action.

OFFENDERS WILL BE TICKETED

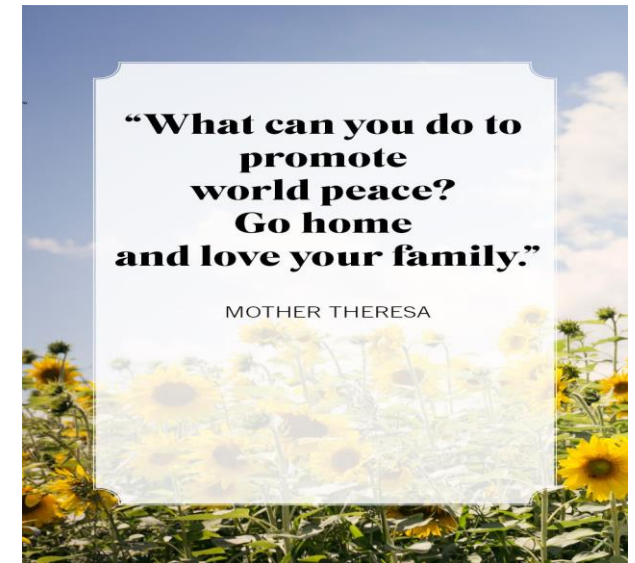
Back to Health Clinic
4619 Second Line W., Prince Township, ON P6A 6K4
Tel. 705-779-3300
ctavormina@sympatico.ca

Dr. Alfonso Tavormina, D.C.
Chiropractor

Auto and Sports Injuries
Extremities ~ Full Spine
Soft Tissue Work ~ Laser Therapy
Electric Stim ~ Ultrasound



**HAPPY
VALENTINES
DAY!**



THE CORNER

Adult Winter Kickball Tournament @ The Corner

Friday, March 10 from 6PM to 9PM

Enter a team from your neighbourhood, business or a group of friends!

Outdoor Kickball at the Airways Field
2667 Second Line West
Prince Township, ON

Registration is by donation with all monies going to the Twinkie Foundation

To Register: Email adam@averyconstruction.ca or text 705-257-7128
Deadline to Register is February 25!





Skating Lessons in Prince Twp

Learn to Skate Session 1

Ages: 3 & 4 years old

Sundays
11am - 11:45am



Learn to Skate Session 2

Ages: 5 - 12 years
old

Sundays
11:45am - 12:30pm

Classes run every Sunday, as weather permits.

Registration for each Sunday class will occur the
Friday before each class.

REGISTER: please view the Community Events page under the
Prince Township Website for the registration link.

Participants need a helmet with a face mask, lace up skates, snow
pants, and gloves. Hockey gloves are okay, however full hockey
equipment is not recommended. Hockey sticks are prohibited.

No skatzees. Red pushers are allowed, however we will have
chairs for the participants to use as pushers.

If you have any questions, please message the Prince Twp Recreation Committee on
Facebook.



Chase the winter blues away by
following the Prince Township Recreation
Committee on Facebook for up-to-date
information on what activities the
committee have planned. So far, it's been
everything from cookie decorating to
skating lessons; you will not want to miss
out!

To Register for Tug of War or Snowshoe Races - PM this account or
go so at Boots and Saddles or Airways General Store

Family Day Celebration At the Corner

Free to
Attend

Saturday, February 18,
10:00AM to 4:00PM

Snowshoe
Races
Tug of War
Smores and
Hot Chocolate
Touch A
Truck
Make Your Own
Maple Candy
Sleigh Rides

Presented
By:

BOOTS & SADDLES
ROADHOUSE

THE AIRWAYS
GENERAL STORE

Register for Snowshoe
Race and Tug Of
War today!

Join Our Team

POSITION: Community Emergency Management Coordinator

RESPONSIBLE TO: CAO/Municipal
Administrator

The Community Emergency Management
Coordinator (CEMC) is responsible for
emergency management within the
boundaries of the rural community of
Prince Township. This person usually
works behind the scenes to ensure that all
emergency services are ready to use and
or deploy in the event of a crisis, whether
natural or man-made.

Typically, a CEMC participates in the
development and implementation of
emergency management goals, objectives,
and priorities. It is his or her job to make
sure that local emergency planning and

emergency preparedness programs are coordinated
with various Municipal and Provincial Government
offices, so that they can be used at any given time of
the day. In the event of a crises, there is great
responsibility on the shoulders of the
CEMC. Approx 10-15 hours per month. Full job
posting on princetownship.ca.

POSITION: Public Works/Maintenance Superintendent

RESPONSIBLE TO: CAO/Municipal Administrator

JOB DESCRIPTION

The Public Works/Maintenance Superintendent
be responsible for all aspects of the planning and
supervision of road construction and maintenance.
Also responsible for the preparation of estimates of
expenses related to construction projects,
maintenance projects and purchase or maintenance
of township equipment and supplies. They would be
directly responsible for the supervision of the Road
Labourer(s) and any student or volunteer workers
involved in Township projects, and indirectly
responsible for supervising the work of contractors,
to ensure all work is carried out in compliance with
Occupational Health and Safety requirements and
practices. Building maintenance work and light
construction (ie painting, drywall repairs, etc.) any
sundry duties as assigned.

If you are interested (or know someone who is) or
are looking for more details, please call the Office.
Currently, this is a seasonal role from March to the
end of October with some call outs over the winter
season. From March to end of October this is a full-
time role.

If this sounds like something you'd be interested in,
please call **705 779 2992** or forward your resume
to clerk@twp.prince.on.