

NEWSLETTER February 2024



A reminder that the Township Office will be closed Monday February 19th, 2024, for Family Day.

FIRST INTERIM INSTALMENT OF TAXES

The first interim instalment of taxes is due **February 25th, 2024**. We are set up for telephone and Internet banking (takes two or three days to be processed by your bank). Please make sure the funds reach us by the due date. We are **not** set up for interac debit, Visa or MasterCard. Cash or cheque only.

HOLIDAY GARBAGE

As a result of the Monday February 19th Family Day Holiday, garbage pick up will be one day late.

RECYCLING CART COLLECTION

Please have your cart out by 7:00 a.m. Your recycling will be picked up every two weeks. **Feb. 1, 15 and 29.**

GARBAGE AND RECYLING BINS

Garbage and recycling bins are to be placed inside the end of your driveway and **NOT** on the edge of the road. In the winter month, it is safer to put them out in the morning, rather than risk them being hit by the snowplough. The cost of replacing bins that are damaged is the responsibility of the property owners.

Happy
**Family
Day**

February 19th 2024

PLEASE NOTE!

The regular council meeting Tuesday February 13th, 2024 has been changed to Tuesday February 20th, 2024 at 6:45 p.m.



THE RINK IS READY FOR SKATING

Rink is open – Rink is closed!
Due to the weather please check out our website for hours of operation.

Just our friendly reminder - Cameras are installed in various locations at the Pavilion and the back of the office to monitor the buildings and yard. We hope this will help to minimize or eliminate any vandalism or misuse of the facilities.

Just a reminder that the Provincial Laws do not permit smoking / vaping **anywhere** on the municipal property.

The change room will be open to put your skates on.

Please make sure you obey the signs and stay off the ice when the rink is closed. If the weather is too mild and the ice is melting, you will jeopardize the rink and delay the re-opening.

Be safe and have fun!

FAMILY
is anyone who
loves you unconditionally.



ATTENTION DOG OWNERS

Under by-law 2001-03, all residents who own a dog or dogs must register them by purchasing an annual dog licence. Dog licences are due Jan. 2nd, 2024 and will be available at the Municipal Office.

To avoid a \$15.00 late fee penalty, all dog licenses must be renewed annually before **March 1st, 2024.**

The cost is \$10.00 for spayed or neutered dogs and \$20.00 otherwise.

We accepting e-transfers to purchase your dog tag. The password will be **dogtag**. Please email your conformation of your dogs last rabies shot and your telephone number to deputyclerk@twp.prince.on.ca.

After we have received your payment and information, we will then mail the dog tags to you.

OR

You can visit the Prince Twp. office.

If you have any other questions, please call the Township Office at 705-779-2992 ext. 1.

If you no longer have your dog, please contact the office.

Purchasing an annual dog license will ensure that your dog is returned quickly should he/she ever stray and assists us in providing animal control services in our community.

COUNCIL MEETING
SCHEDULE

Regular Council Meetings
and Planning Matters
Tuesday February 20th, 2023
6:45 p.m.

Agendas are posted on the website the day before the meeting. If you require a copy, please call ahead so it can be printed for pickup on Monday.
A fee of \$0.25/page applies.

ANIMAL CONTROL OFFICER

Barbie Rudnicki (705)255-0419

Happy
Valentine's Day



If you would like to have the newsletter emailed to you every month, please email deputyclerk@twp.prince.on.ca



“Having a place to go is a home. Having someone to love is a family. Having both is a blessing.”

DONNA HEDGES

Back to Health Clinic
4619 Second Line W., Prince Township, ON P6A 6K4
Tel. 705-779-3300
ctavormina@sympatico.ca

Dr. Alfonso Tavormina, D.C.
Chiropractor

Auto and Sports Injuries
Extremities ~ Full Spine
Soft Tissue Work ~ Laser Therapy
Electric Stim ~ Ultrasound



ONTARIO EARLY YEARS

Prince Township EarlyON Child and Family Centre is open for in-person programming! All program and event information can be found at www.keyon.ca as well as on our Facebook page. Please call 705-779-3627 for more information.

Monday	9:00am – 2:00pm
Tuesday	9:00am – 12:00pm
Wednesday	9:00am – 2:00pm
Thursday	2:00pm – 7:00pm
Friday	9:00am – 2:00pm

Find us on Facebook: EarlyOn Child and Family Centre Prince, SSM & Sault North



LIBRARY NEWS

WE ARE A VOLUNTEER RUN LIBRARY AND OCCASIONALLY ARE NOT AVAILABLE. PLEASE CALL FIRST 705-779-2992 EX.5

HOURS: There is a CHANGE on TUESDAY. The library is open 1:00 to 3:00 p.m.

BOOKS: We have purchased (thanks to the Friends of the Library) some new titles that patrons have requested and they will be on the BROWN TABLE as soon as possible.

Life in Two Worlds by Ted Nolan and Meg Masters and astronaut Chris Hadfield's two thriller novels; The Apollo Murders and The Defector.

BOOK CLUB: This is held on the THIRD WEDNESDAY of the month at 1:00 p.m.

You are welcome to join us at any time. FEBRUARY'S. selection is NORTH OF NORMAL by Cea Sunrise Person is a memoir.

Our MARCH selection will be THIS TIME TOMORROW by Emma Straub.

RECOMMENDED BOOKS: These are

from our McNaughton selection found on the back bookcase.

THE EDGE by David Baldacci. "The 6:20 man is back, dropped by his handler into a small coastal town in Maine to solve the murder of a CIA agent who knew America's dirtiest secrets. Can Travis Devine uncover the truth before his time runs out?"

THE EXCHANGE After the Firm by John Grisham. This novel is the sequel to The Firm. Mitch and Abbey McDeere are now living in Manhattan where Mitch is a partner at the largest law firm in the world. He's asked to do a favor and finds himself at the centre of a sinister plot...

THE BERRY PICKERS a novel by Amanda Peters. " A four year old Mi'kmaq girl goes missing from the blueberry fields of Maine, sparking a tragic mystery that haunts the survivors, unravels a family, and remains unsolved for nearly fifty years."

BOOK SALE: We have hard cover for \$1.00, trade paper backs for 50 cents other PBs are 25 cents each and most children's books 25 cents each or five for \$1.00. Come in and browse. We have something for all ages!

POSTAL DELIVERY / 911 SIGNS

Property owners are reminded to keep mailboxes (including green boxes) clear of snow and other obstacles to receive uninterrupted mail should be kept clear of snow so that they are visible by emergency vehicles. The sign should be visible by emergency personnel from 100ft.

Snowmobile Safety

Before you leave

- fill up your gas tank
- check the weather forecast before heading out.
- contact the local snowmobile club to check trail and ice conditions
- dress appropriately – wear clothing in layers, and make your top layer a snowmobile suit or other windproof layer
- tell someone :
 - where you're going
 - the route you will take
 - a description of your snowmobile
 - when you expect to return
 - **never** travel alone

Remember: Exposure to extreme cold can lead to frostbite and hypothermia. Your risk goes up as the temperature goes down.

What to bring

Pack a snowmobile survival kit that includes:

- first aid kit
- GPS unit, trail map and compass
- matches (or lighter) in a waterproof container
- knife, saw or axe
- ice picks (if you must cross over a frozen river or lake)
- flashlight
- whistle
- high-energy food like nuts or granola bars
- an extra set of dry clothing

You should also bring a snowmobile mechanical kit that includes:

- spare spark plug and drive belt
- tow rope
- screwdriver, wrenches and hammer
- owner's manual

While you are driving

- always drive within your ability
- take extra care on corners and hills
- obey speed limits and road/trail signs
- always stay on the right-hand side of the trail
- use appropriate hand signals before stopping, slowing down or turning
- take extra care at road and rail crossings – cross roads at designated crossings and at a 90-degree angle so you can cross safely and quickly
- never ride on private property without permission of the land owner

Driving at night

- reduce your speed – some hazards are harder to see in the dark
- use your headlights and drive at a speed where they can shine ahead of you
- wear clothing that has reflective markings so that you are more visible to others.

Driving on ice

- avoid driving on unfamiliar frozen lakes and rivers, as open water may not be visible
- if you must drive over ice, wear a buoyant snowmobile suit
- always drive on ice that is new, hard and clear
- never drive on ice that is slushy, weak, near moving water or that has recently thawed and refrozen
- check ice conditions with the local snowmobile club before you head out

www.ofsc.on.ca/

Know the dangers of ice

Ice Factors

Many factors affect ice thickness including type of water, location, the time of year and other environmental factors such as:

- Water depth and size of body of water.
- Currents, tides, and other moving water.
- Chemicals including salt.
- Fluctuations in water levels.
- Logs, rocks, and docks absorbing heat from the sun.
- Changing air temperature.
- Shock waves from vehicles traveling on the ice.

Ice Colour

- The colour of ice may be an indication of its strength.
- Clear blue ice is strongest.
- White opaque or snow ice is half as strong as blue ice. Opaque ice is formed by wet snow freezing on the ice.
- Grey ice is unsafe. The grayness indicates the presence of water.

Did you know ice thickness should be:

- 15 cm for walking or skating alone.
- 20 cm for skating parties or games
- 25 cm for snowmobiles.

Check with local authorities before heading out. Avoid going out on ice at night.

Safety reminder to residents Smoke and Carbon Monoxide Alarms

Property owners ensure you have working smoke alarms on each storey of your home and outside every sleeping area.

Fire moves so fast that you may have less than 60 seconds to safely escape a fire, so early warning is crucial to survival. Only working smoke alarms give you that early warning. Developing and practicing a home escape plan is just as important.

Simple smoke and carbon monoxide alarm tips:

- Install smoke alarms on every storey and outside all sleeping areas of your home. For added protection, install a smoke alarm in every bedroom according to manufacturer's recommendations. Larger homes may require additional smoke alarms;
- Install carbon monoxide alarms outside all sleeping areas if your home has a fuel-burning appliance, fireplace or attached garage. For added protection, install a carbon monoxide alarm on every storey of your home according to manufacturer's recommendations;
- Test smoke and carbon monoxide alarms monthly by pressing the test button. Change the batteries every year;
- Smoke and carbon monoxide alarms wear out over time. Replace alarms according to manufacturer's recommendations.

Simple steps for home fire escape planning include:

- Everyone should know two ways out of each room, if possible;
- All exits must be unobstructed and easy to use;
- If someone in your home has a disability, develop a home fire escape plan with your

household that considers their unique needs. Determine who will be responsible for helping young children, older adults and anyone who needs assistance to escape;

- Choose a meeting place outside, such as a tree or a lamp post, where everyone can be accounted for;
- Call the fire department from outside the home, from a cell phone or a neighbour's home;
- Practice your home fire escape plan; and,
- Once out, stay out. Never re-enter a burning building.

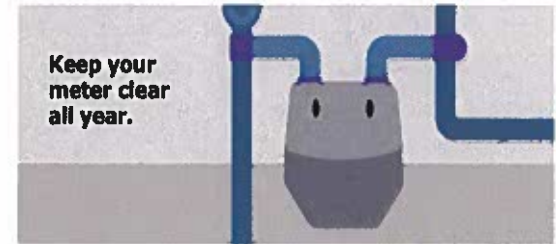


Our Prince Twp. Volunteer Fire Dept. use green flashing lights in their personal vehicles when they are responding to the fire hall for an emergency. If you see a vehicle with a green flashing light, please yield the right of way.

Thanks for your co-operation!

GAS METER SAFETY

Gas Meter Safety



It's important to **keep your natural gas meter and exhaust vents free of ice and snow** in winter, and clear of storage boxes, garden tools and vegetation in summer. This helps ensure that gas-fired equipment functions safely and efficiently, and allows Union Gas easy access for accurate meter readings or emergency response.

Indoor heating equipment – your furnace, water heater and thermostat – needs to be accessible too. Please ensure that storage boxes and household supplies are kept well away from indoor appliances so Union Gas or your heating contractor can get at them for emergency service or repairs.

Be sure your pets are secured and not blocking access to your gas meter or equipment during meter reading and service calls. A visiting Union Gas representative can surprise even the friendliest dog and lead to aggressive behavior and bites.

**HAPPY
VALENTINES
DAY!**

HOME SAFETY TIPS

Natural gas is an efficient and cleaner way to heat your home and water. Follow these tips for staying safe all year round.

1. Install a carbon monoxide detector in your home –install at least one near sleeping areas and each floor and test monthly.
2. Have your natural gas appliances/equipment serviced and maintained by a TSSA registered heating contractor yearly.
3. Keep your fireplace clean and free of obstructions . Install a safety screen or hearth guard.
4. Go outside immediately and call 911 or the Enbridge Gas emergency number if you smell rotten eggs and suspect a leak

STAY SAFE

PRINCE TOWNSHIP RECYCLING CART COLLECTION

The recycling cart does not have to be placed out on every pick-up. It should not be put out unless it is at least half full.

Carts must be out by 7:30 a.m. on your pick-up day.

Please remove caps/lids and rinse food contents before recycling containers. All food trays, strawberry containers, etc. are not accepted and should be placed in your garbage. Large quantities of cardboard boxes should be broken down to 2' x 2' x 1' bundles (taped or tied with string) and placed beside the collection cart.

Note: Florescent lights are to be disposed of at the **Household Hazardous Waste Depot**.

Blue Lid

- Steel (tin) food cans
- Aluminium cans
- No. 1 plastic bottles (i.e. pop bottles)
- No. 2 plastic bottles (i.e. shampoo bottles)
- Glass bottles and jars

Grey Lid

- Newspapers and flyers
- Magazines
- Phone books
- Boxboard/small boxes (i.e. cereal boxes)
- Paper egg cartons
- Toilet/towel paper rolls
- Clean milk cartons
- Clean pizza boxes
- All other paper products (i.e. mail, computer paper)



Emergency Preparedness starts with You

- Do you know what to do in an Emergency?

- Do you have the things you will need?

It's easy visit www.ontario.ca/beprepared

Remember - Be neighbourly.
Check on your neighbours.

A MESSAGE FROM YOUR EMERGENCY MANAGEMENT TEAM

The world Pandemic should serve to remind us that "it can happen here".

A pandemic is only one of many challenges that we may face. Our Emergency Management Team has spent much time and effort to identify and to prioritize the potential emergencies that our municipality may face. Fires, storms, extended power outages to name a few, but pandemic was the last on our list.

We encourage you to make 2024 the year to get "Prepared."

Emergency Management Ontario recommends that we all prepare to have the items you and your family will need to live for 72 hrs.

You can visit Emergencymanagementontario.ca to get started.

Thank you and Stay Safe.

Happy Valentine's Day