

THE CORPORATION OF THE TOWNSHIP OF PRINCE

BY-LAW NUMBER 2021-12

Being a by-law to stop up and close that part of Pinder Drive, Part 2 Plan, being part of PIN Number 31618-0687, and being Part 30 of Plan 1R-2403.

WHEREAS Council deems it desirable to stop up and close that part of Pinder Drive, Part 2 Plan, being part of PIN Number 31618-0687, and being Part 30 of Plan 1R-2403,

NOW THEREFORE the Council of the Corporation of the Township of Prince **ENACTS AS FOLLOWS:**

1. **THAT** part of part of Pinder Drive, Part 2 Plan, being part of PIN Number 31618-0687, and being Part 30 of Plan 1R-2403, is hereby stopped up and closed.
2. **THAT** this by-law shall come into force and effect upon the final passing thereof, and upon registration in the Land Registry Office in the District of Algoma.

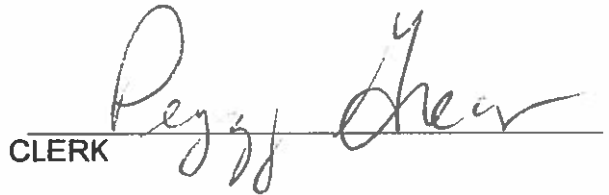
Read a first and second time this 13th day of April 2021.

Read a third time and finally passed this 13th day of April 2021.



MAYOR

SEAL



CLERK

Agenda Item 9a)

61 - 0684

31

0.066

0.066

60.397(NAM)
79.240(P2)
81.737

IB BX
UTILITY
POLE
INTERSECTION

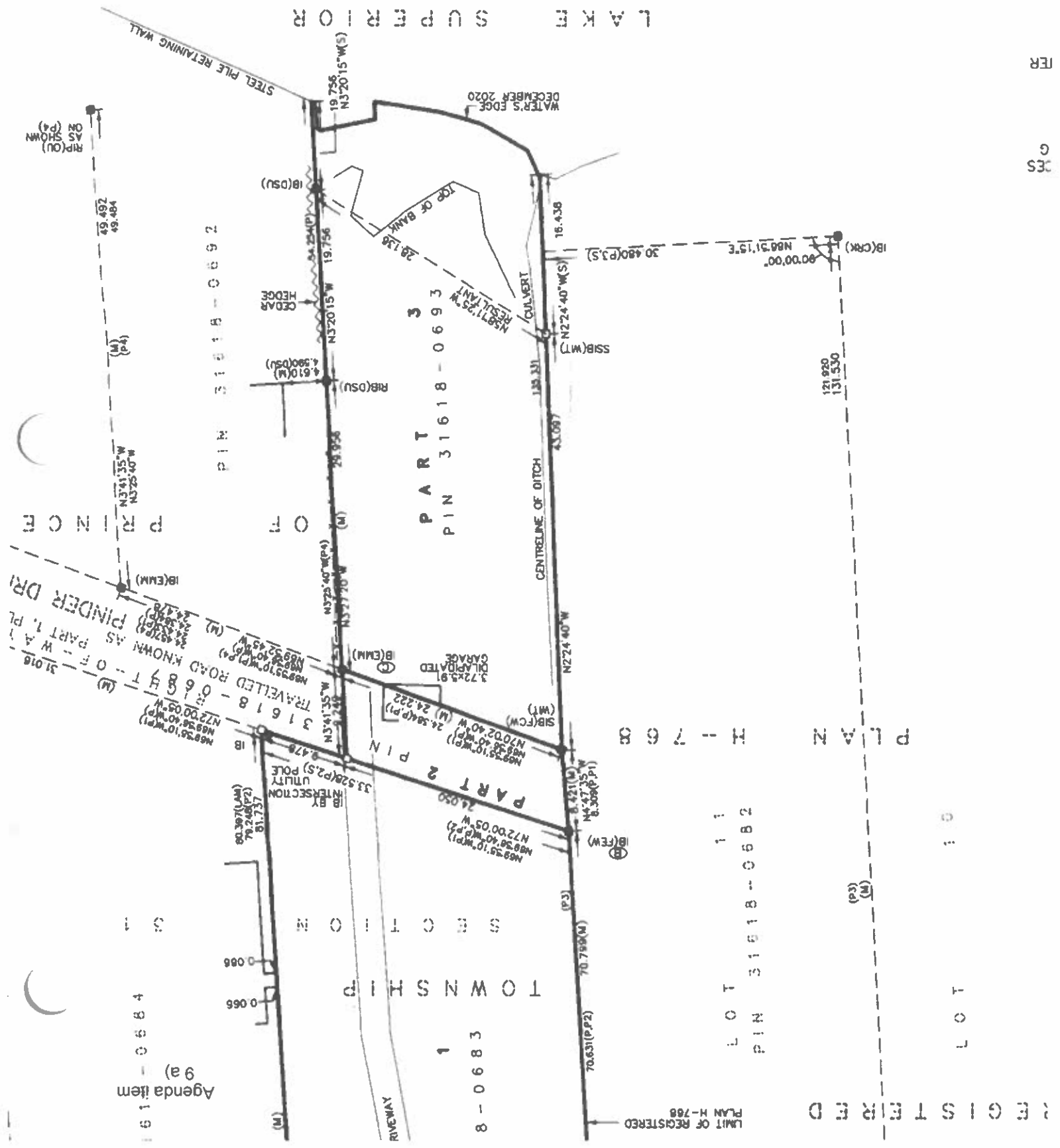
TOWNSHIP

SECTION

8 - 0683

1

RIVEWAY



LAKE SUPERIOR

STEEL PILE RETAINING WALL

WATER'S EDGE
DECEMBER 2020

RIP(OU)
AS SHOWN
ON (P4)

PIN 31618-0692

PART 3
PIN 31618-0693

CENTRELINE OF DITCH

CULVERT

PLAN H-768

LOT 11
PIN 31618-0682

LOT 10

REGISTERED

LIMIT OF REGISTERED
PLAN H-768

DES
G
FER