



# NEWSLETTER February 2021

**A reminder that the Township Office will be closed Monday February 15<sup>th</sup> 2021 for Family Day.**

## FIRST INTERIM INSTALMENT OF TAXES

The first interim instalment of taxes is due **February 25<sup>th</sup>, 2021**. We are set up for telephone and Internet banking (takes two or three days to be processed by your bank). Please make sure the funds reach us by the due date. We are **not** set up for debit, Visa or MasterCard. Cash or cheque only.

## HOLIDAY GARBAGE

As a result of the Monday February 15<sup>th</sup> Family Day Holiday, garbage pick up will be one day late.

## RECYCLING CART COLLECTION

Please have your cart out by 7:30 a.m. Your recycling will be picked up every two weeks. **Feb. 4, 19** (one day late because of the Family Day Holiday), **Mar. 4<sup>th</sup>**

## GARBAGE AND RECYLING BINS

Garbage and recycling bins are to be placed inside the end of your driveway and **NOT** on the edge of the road. In the winter month, it is safer to put them out in the morning, rather than risk them being hit by the snowplough. The cost of replacing bins that are damaged is the responsibility of the property owners.



*February 15<sup>th</sup> 2021*

## SNOW REMOVAL REMINDER



Pushing snow across roads and streets is not only a safety hazard; it is also against the law. The Ontario Traffic Act states:  
No person shall deposit snow or ice on a roadway without permission in writing to do so from the Ministry or the road authority responsible for the maintenance of the road. R.S.O. 1990, c. H.8, s. 181

Prince Twp. By-law 2019-38 also prohibits this action.

**OFFENDERS WILL BE TICKETED**

## POSTAL DELIVERY / 911 SIGNS

Property owners are reminded to keep mailboxes (including green boxes) clear of snow and other obstacles in order to receive uninterrupted mail should be kept clear of snow so that they are visible by emergency vehicles. The sign should be visible by emergency personnel from 100ft.

## A MESSAGE FROM YOUR EMERGENCY MANAGEMENT TEAM

The world Pandemic should serve to remind us that "it can happen here"  
A pandemic is only one of many challenges that we may face. Our Emergency Management Team has spent much time and effort to identify and to prioritize the potential emergencies that our municipality may face. Fires, storms, extended power outages to name a few, but pandemic was the last on our list.

We encourage you to make 2021 the year to get "Prepared"  
Emergency Management Ontario recommends that we all prepare to have the items you and your family will need to live for 72 hrs.

You can visit [Emergencymanagementontario.ca](http://Emergencymanagementontario.ca) to get started.

Thank you and Stay Safe.

\*\*\*\*\*

***"What good is the warmth of summer,  
without the cold of winter to give it  
sweetness."  
John Steinbeck***



## THE RINK IS READY FOR SKATING

The Prince Township Festival and Event Pavilion rink is up and running.

**Rink is open – 11am. to 7 pm.  
No hockey games, only skating.**

The hall and rinks will not be rented until further notice. There are restrictions on numbers according to the Algoma Public Health and Provincial regulation 364-20. Housekeeping rules are as follows:

1. Please sign in
2. No groups larger than 5 people.
3. Masks are recommended even when outdoors.
4. Please respect other skaters and stay 6 feet away (2 metres) away from anyone outside your household
5. There can be no organized hockey or hockey games at this time
6. Change rooms and washrooms remain closed
7. Prince Township is not responsible for any lost or stolen items.

Cameras are installed in various locations at the Pavilion and the back of the office to monitor the buildings and yard. We hope this will help to minimize or eliminate any vandalism or misuse of the facilities.

Just a reminder that the Provincial Laws do not permit smoking / vaping **anywhere** on the municipal property.

The change rooms and washrooms will NOT be open to the public this year, due to covid 19. Benches will be available to sit and put your skates on.

Please make sure you obey the signs and stay off the ice when the rink is closed. If the weather is too mild and the ice is melting, you will jeopardize the rink and delay the re-opening.

Be safe and have fun!

***Reminder: Smoking or Vaping is  
NOT permitted on Municipal  
Property***



## **ATTENTION DOG OWNERS**

Under by-law 2001-03, all residents who own a dog or dogs must register them by purchasing an annual dog licence. Dog licences are due Jan. 2<sup>nd</sup>, 2020 and will be available at the Municipal Office.

To avoid a \$15.00 late fee penalty, all dog licenses must be renewed annually before **March 1<sup>st</sup>, 2021.**

The cost is \$7.50 for spayed or neutered dogs and \$15.00 otherwise.

We will be accepting e-transfers this year. The password will be dogtag. Please email your conformation of your dogs last rabie shot and your telephone number to [lorraine@twp.prince.on.ca](mailto:lorraine@twp.prince.on.ca) .

OR

We have a locked black mailbox next to the entrance door at the Community Centre and your information and cheque can be placed in there.

After we have received your payment and information, we will then mail the dog tags to you.

If you have any other questions, please call the Township Office at 705-779-2992 ext. 1.

If you no longer have your dog, please contact the office.

Purchasing an annual dog license will ensure that your dog is returned quickly should he/she ever stray and assists us in providing animal control services in our community.

## **CAO/TREASURER REPORT**

25<sup>th</sup> Anniversary!



**BLACK HISTORY  
MONTH IN CANADA**

### **Black history in Canada**

People of African descent have been a part of shaping Canada's heritage and identity since the arrival of Mathieu Da Costa, a navigator and interpreter, whose presence in Canada dates back to the early 1600s.

The role of people of African descent in Canada has not always been viewed as a key feature in

Canada's historic landscape. There is little mention that some of the Loyalists who came here after the American Revolution and settled in the Maritimes were people of African descent, or of the many sacrifices made in wartime by soldiers of African descent as far back as the War of 1812.

Few Canadians are aware of the fact that African people were once enslaved in the territory that is now Canada, or of how those who fought enslavement helped to lay the foundation of Canada's diverse and inclusive society.

Black History Month is a time to learn more about these Canadian stories and the many other important contributions of Black Canadians to the settlement, growth and development of Canada, and about the diversity of Black communities in Canada and their importance to the history of this country.

As you are aware, the office remains closed to the public. We are however working to provide the same services you require, albeit in a different manner. Council has been hosting their meetings via zoom, and a link is provided on our social media sites on the Friday before the meeting.



February 15<sup>th</sup> marks the 14<sup>th</sup> annual Family Day. This year may look a bit different, as we are still dealing with time apart from our loved ones. Cherish them, be responsible and most importantly, stay safe! Staff will not be in the office this day.

With the restrictions imposed by the Province via the Algoma Public Health Unit, the rink remains open, but rules need to be followed. At

the present time, no team sports of any kind are allowed, social distancing must be adhered to, and no groups of more than 5 individuals are allowed. Individuals must sign in and masks or facial coverings are highly recommended.

The township is applying for funding for road students and a museum student. Please watch for the information in coming newsletters when we find out if our funding is approved.

They say that love is more important than money, but have you ever tried to pay your bills with a hug? – Anonymous



Respectfully,  
Peggy Greco

If you have any questions, comments or concerns, please contact the Municipal Office, or any member of Council:

**Mayor**

Ken Lamming 705 - 971-3663  
[klamming@princetwp.ca](mailto:klamming@princetwp.ca)

**Councillors**

Dave Amadio 705-779-2836  
[damadio@princetwp.ca](mailto:damadio@princetwp.ca)

Ian Chambers 705-779-3364  
[ichambers@princetwp.ca](mailto:ichambers@princetwp.ca)

Enzo Palumbo 705-975-4343  
[epalumbo@princetwp.ca](mailto:epalumbo@princetwp.ca)

Michael Matthews 705-779-3575  
[mmathews@princetwp.ca](mailto:mmathews@princetwp.ca)

**COUNCIL MEETING  
SCHEDULE**

Regular Council Meetings  
Tuesday February 9<sup>th</sup>, 2021  
6:45 p.m.

**Via Zoom. A link will be provided to you at your request by contacting Katrina at [spc@princetwp.ca](mailto:spc@princetwp.ca) and on our social media.**

Agendas are posted on the website the day before the meeting. If you require a copy, please call ahead so it can be printed for pickup on Monday.  
**A fee of \$0.25/page applies.**

**BY-LAW ENFORCEMENT OFFICER**  
Dave Harnish (705)-779-9927

**ANIMAL CONTROL OFFICER**  
Barbie Rudnicki (705)255-0419





Please follow the Prince Township EarlyON Child and Family Centre on Facebook at <https://www.facebook.com/EarlyOn-Child-and-Family-Centre-Prince-SSM-Sault-North-100505418293/> for current updates, at-home activities and more information for families. We look forward to continuing to support and engage with our communities through social media!



## LIBRARY

**LIBRARY HOURS:** We will continue to offer curbside service/pickup, 10:00 a.m. to 4:00 p.m. until we hear differently from provincial. If you need your user name and pin number to access **OPAC** (on line patron search of library materials), please call the library and leave a message. 705-779-2992 ext. 5. If you want, I can make up an order for you from authors that you like. Call me.

### **USE OPAC: Instructions follow.**

OPAC is similar to Overdrive in the sense that it is an online database, however, OPAC is directly linked to our library and shows a

catalogued inventory of all the items we have in the library, synced through ResourceMate. Patrons can use OPAC to request books remotely from their home. This can be used to organize curbside pick-up for their library books. Especially useful during the COVID-19 pandemic.

### **Access and Operation of OPAC:**

1. OPAC for our library can be reached by typing in the following web address into the address bar, <https://16052.rmwebopac.com/>
2. You will be directed to the Prince Township Public Library OPAC home page.
3. You must then click the Sign In icon in the upper right-hand corner of the screen.
4. You will type in the username provided to you from the library, typically in the format: lastnamefirstname
5. Your pin number, also provided by the library, will be the last 4 digits of your 5 digit barcode. Ex. if your barcode is 12345, your OPAC pin will be 2345.
6. When signed in you can search authors, titles, etc. You can add items you want to check out to your Book Bin.
7. To send the request, click the Book Bin icon once you are done browsing.
8. You must then do the following steps:
  - a. Press the email icon (it looks like an envelope).
  - b. In the From section, fill in your email address.
  - c. In the To section, fill in the library's email address, [ptpl@twp.prince.on.ca](mailto:ptpl@twp.prince.on.ca)

- d. In the Subject section, type something along the lines of "Book Request"
  - e. Specify if you would like to be contacted by Phone or Email in the notes section.
  - f. Press send.
9. When the request is received and processed, you will either be contacted by Phone or Email to set up a pick-up time.
  10. All pick-ups will happen at the Library Book Drop-Off Box.

**INTER LIBRARY LOAN:** This service is still available to us, even in lock down. If we don't have it, we may be able to get it from another library. Call us and leave the information. I will get back to you.

**RECOMMENDED BOOKS:** Our orders from McNaughton are slowly coming in and we have some real winners. I know that a lot of you are using our OVERDRIVE service and I am glad that you are still reading. Some patrons have received books as gifts and are willing to donate them when they are finished them.

**LITTLE DISASTERS** by Sarah Vaughan. A doctor faces an ethical dilemma when her friend's ten month old daughter is brought to the emergency room, after a fall at home. "It is a thought provoking novel, exploring motherhood and all that connects and disconnects us."

**THE GOLDEN CAGE** by Camilla Lackberg a Swedish author is a psychological thriller and is a WOW book that I finished in three days. The story of a scorned billionaire's wife, her plot to get revenge, and bring him to his knees. There are some scenes that you may not like.

**THE THURSDAY MURDER CLUB** written by Richard Osman. Four unlikely friends meet weekly to discuss unsolved crimes. When a local developer is found dead, they find themselves in the middle of their first live case. Can the unorthodox but brilliant gang of

septuagenarians catch the killer before it's too late?

"A tale of four very different friends sharing their heart's desires"... on line dating" **CAREFUL WHAT YOU CLICK FOR** by Mary B. Morrison. Gilly MacMillian has written a suspense novel about a missing child, the life of a writer, a vanished husband. Finally, Lucy Harper's going **TO TELL YOU THE TRUTH... everybody lies**

**LARGE PRINT BOOKS:** Our new block of twenty five books has arrived from Ontario Library Service North for your reading pleasure. They include westerns, romance, thrillers, mystery/suspense, and non fiction. We have them until the beginning of March, when we will get a new shipment.

**Please read the note about donations.**

**DONATIONS:** AT THE PRESENT TIME WE ARE NOT ACCEPTING ANY DONATIONS. HOWEVER !!! If they are recent books and in good condition, we may reconsider. Call 705-779- 2992 ext.5 and leave a message.



## **Safety reminder to residents Smoke and Carbon Monoxide Alarms**

Property owners ensure you have working smoke alarms on each storey of your home and outside every sleeping area.

Fire moves so fast that you may have less than 60 seconds to safely escape a fire, so early warning is crucial to survival. Only working smoke alarms give you that early warning. Developing and practicing a home escape plan is just as important.

### **Simple smoke and carbon monoxide alarm tips:**

- Install smoke alarms on every storey and outside all sleeping areas of your home. For added protection, install a smoke alarm in every bedroom according to manufacturer's recommendations. Larger homes may require additional smoke alarms;
- Install carbon monoxide alarms outside all sleeping areas if your home has a fuel-burning appliance, fireplace or attached garage. For added protection, install a carbon monoxide alarm on every storey of your home according to manufacturer's recommendations;
- Test smoke and carbon monoxide alarms monthly by pressing the test button. Change the batteries every year; and,
- Smoke and carbon monoxide alarms wear out over time. Replace alarms according to manufacturer's recommendations.

## **Simple steps for home fire escape planning include:**

- Everyone should know two ways out of each room, if possible;
- All exits must be unobstructed and easy to use;
- If someone in your home has a disability, develop a home fire escape plan with your household that takes into account their unique needs. Determine who will be responsible for helping young children, older adults and anyone who needs assistance to escape;
- Choose a meeting place outside, such as a tree or a lamp post, where everyone can be accounted for;
- Call the fire department from outside the home, from a cell phone or a neighbour's home;
- Practice your home fire escape plan; and,
- Once out, stay out. Never re-enter a burning building.

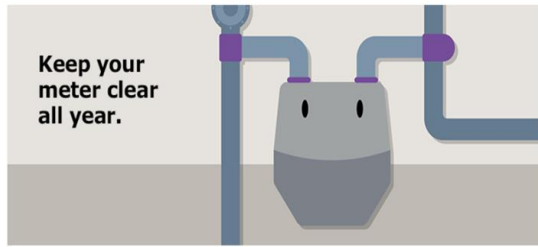


Our Prince Twp. Volunteer Fire Dept. use green flashing lights in their personal vehicles when they are responding to the fire hall for an emergency. If you see a vehicle with a green flashing light, please yield the right of way.

Thanks for your co-operation!

## GAS METER SAFETY

Gas Meter Safety



It's important to **keep your natural gas meter and exhaust vents free of ice and snow** in winter, and clear of storage boxes, garden tools and vegetation in summer. This helps ensure that gas-fired equipment functions safely and efficiently, and allows Union Gas easy access for accurate meter readings or emergency response.

Indoor heating equipment – your furnace, water heater and thermostat – needs to be accessible too. Please ensure that storage boxes and household supplies are kept well away from indoor appliances so Union Gas or your heating contractor can get at them for emergency service or repairs.

Be sure your pets are secured and not blocking access to your gas meter or equipment during meter reading and service calls. A visiting Union Gas representative can surprise even the friendliest dog and lead to aggressive behavior and bites.

### HOME SAFETY TIPS

Natural gas is an efficient and cleaner way to heat your home and water. Follow these tips for staying safe all year round.

1. Install a carbon monoxide detector in your home – install at least one near

sleeping areas and each floor and test monthly.

2. Have your natural gas appliances/equipment serviced and maintained by a TSSA registered heating contractor yearly.
3. Keep your fireplace clean and free of obstructions. Install a safety screen or hearth guard.
4. Go outside immediately and call 911 or the Enbridge Gas emergency number if you smell rotten eggs and suspect a leak

### STAY SAFE



### PRINCE TOWNSHIP RECYCLING CART COLLECTION

The recycling cart does not have to be placed out on every pick-up. It should not be put out unless it is at least half full.

Carts must be out by 7:30 a.m. on your pick-up day.

Please make sure the lids are completely closed.

Please remove caps/lids and rinse food contents before recycling containers. All food trays, strawberry containers, etc. are not accepted and should be placed in your garbage. Large

quantities of cardboard boxes should be broken down to 2' x 2' x 1' bundles (taped or tied with string) and placed beside the collection cart.

**Note:** Fluorescent lights are to be disposed of at the [Household Hazardous Waste Depot](#).

### Blue Lid

- Steel (tin) food cans
- Aluminium cans
- No. 1 plastic bottles (i.e. pop bottles)
- No. 2 plastic bottles (i.e. shampoo bottles)
- Glass bottles and jars

### Grey Lid

- Newspapers and flyers
- Magazines
- Phone books
- Boxboard/small boxes (i.e. cereal boxes)
- Paper egg cartons
- Toilet/towel paper rolls
- Clean milk cartons
- Clean pizza boxes
- All other paper products (i.e. mail, computer paper)

Happy Valentine's Day



**Emergency Preparedness starts with You**

- Do you know what to do in an Emergency?
- Do you have the things you will need?

It's easy visit [www.ontario.ca/beprepared](http://www.ontario.ca/beprepared)

Remember - Be neighbourly  
Check on your neighbours

**Invitation to participate: Solid Wood Bioheat Webinar Series**

You're invited to participate in the upcoming Solid Wood Bioheat Webinar Series, organized in partnership between Ontario's Ministry of Natural Resources and Forestry, FPInnovations, Natural Resources Canada, and the Centre for Research and Innovation in the Bio-Economy (CRIBE).

This six-part webinar series will introduce participants to some of the key considerations for using solid woody fuels for heating in Ontario. During the sessions participants will hear from bioheat experts as well as business and community leaders who will share success stories and discuss how bioheat supports Ontario's forest industry while providing a sustainable and renewable source of heating. Session speakers will discuss bioheat

equipment and projects of all sizes, including residential, commercial, industrial, and community scale projects.

The Solid Wood Bioheat Webinar Series will run weekly from February 4<sup>th</sup> to March 11<sup>th</sup>, 2021 and is free to join. Weekly sessions will run from 11:00 AM to 12:00 PM and will be hosted online through Microsoft Teams Live Events.

Webinar Session	Date and Time
#1: Why Choose Bioheat	February 4, 2021 11:00 AM to 12:00 PM Eastern time
#2: Solid Woody Biofuels	February 11, 2021 11:00 AM to 12:00 PM Eastern time
#3: Bioheat Combustion Systems	February 18, 2021 11:00 AM to 12:00 PM Eastern time
#4: Project Planning	February 25, 2021 11:00 AM to 12:00 PM Eastern time
#5: Ontario Success Stories	March 4, 2021 11:00 AM to 12:00 PM Eastern time
#6: Canadian Success Stories	March 11, 2021 11:00 AM to 12:15 PM Eastern time

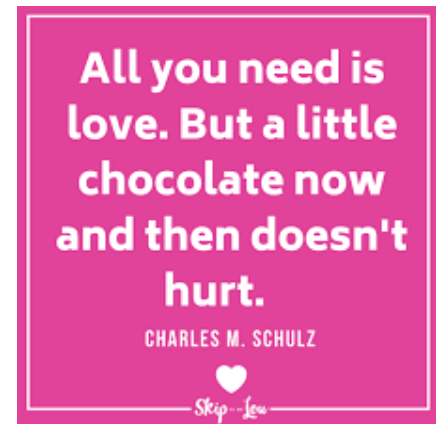
Material covered in this series will compliment [A Solid Wood Bioheat Guide for Rural and Remote Communities in Ontario](#), published by FPInnovations in February 2020.

**More detailed information about each session, and links to register via EventBrite can be found on CRIBE's website: <http://www.cribe.ca/resources/bioheat-webinar-series>.**

Feel free to share this invitation to someone in your network who might be interested. To promote the series over social media the Ministry of Natural Resources and Forestry will be making posts about the webinars over the coming weeks – please consider following along online to share, pin or re-tweet!

If you have questions about this series please contact Jonathan Halasz, who will be happy to assist you. He can be reached at [jonathan.halasz@ontario.ca](mailto:jonathan.halasz@ontario.ca).

Thank you for your consideration – we hope to see you online!



## Snowmobile Safety

### Before you leave

- fill up your gas tank
- check the weather forecast before heading out.
- contact the local snowmobile club to check trail and ice conditions
- dress appropriately – wear clothing in layers, and make your top layer a snowmobile suit or other windproof layer
- tell someone :
  - where you're going
  - the route you will take
  - a description of your snowmobile
  - when you expect to return
- **never** travel alone

**Remember:** Exposure to extreme cold can lead to frostbite and hypothermia. Your risk goes up as the temperature goes down.

### What to bring

Pack a snowmobile survival kit that includes:

- first aid kit
- GPS unit, trail map and compass
- matches (or lighter) in a waterproof container
- knife, saw or axe
- ice picks (if you must cross over a frozen river or lake)
- flashlight
- whistle
- high-energy food like nuts or granola bars
- an extra set of dry clothing

You should also bring a snowmobile mechanical kit that includes:

- spare spark plug and drive belt
- tow rope
- screwdriver, wrenches and hammer
- owner's manual

### While you are driving

- always drive within your ability
- take extra care on corners and hills
- obey speed limits and road/trail signs
- always stay on the right-hand side of the trail
- use appropriate hand signals before stopping, slowing down or turning
- take extra care at road and rail crossings – cross roads at designated crossings and at a 90-degree angle so you can cross safely and quickly
- never ride on private property without permission of the land owner

### Driving at night

- reduce your speed – some hazards are harder to see in the dark
- use your headlights and drive at a speed where they can shine ahead of you
- wear clothing that has reflective markings so that you are more visible to others

### Driving on ice

- avoid driving on unfamiliar frozen lakes and rivers, as open water may not be visible
- if you must drive over ice, wear a buoyant snowmobile suit
- always drive on ice that is new, hard and clear
- never drive on ice that is slushy, weak, near moving water or that has recently thawed and refrozen
- check ice conditions with the local snowmobile club before you head out

[www.ofsc.on.ca/](http://www.ofsc.on.ca/)

## Know the dangers of ice

### Ice Factors

Many factors affect ice thickness including: type of water, location, the time of year and other environmental factors such as:

- Water depth and size of body of water.
- Currents, tides and other moving water.
- Chemicals including salt.
- Fluctuations in water levels.
- Logs, rocks and docks absorbing heat from the sun.
- Changing air temperature.
- Shock waves from vehicles traveling on the ice.

### Ice Colour

- The colour of ice may be an indication of its strength.
- Clear blue ice is strongest.
- White opaque or snow ice is half as strong as blue ice. Opaque ice is formed by wet snow freezing on the ice.
- Grey ice is unsafe. The grayness indicates the presence of water.
- 

### Did you know ice thickness should be:

- 15 cm for walking or skating alone
- 20 cm for skating parties or games
- 25 cm for snowmobiles.

Check with local authorities before heading out. Avoid going out on ice at night.



